



Old Mill Buildings Alyth, PH11 8DT
Offers over £65,000



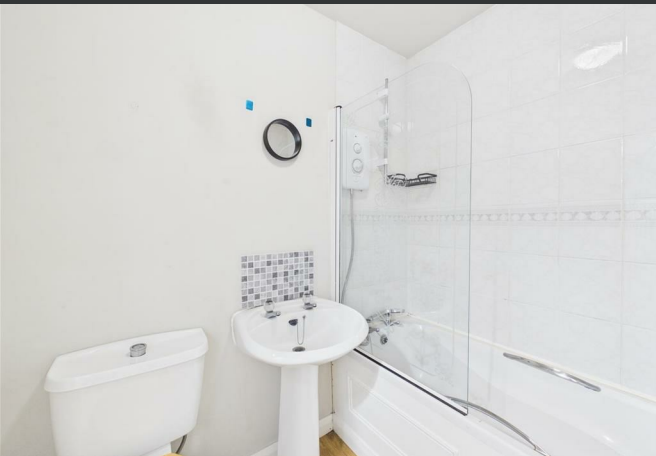
Old Mill Buildings Alyth , PH11 8DT

Offers over £65,000

- Spacious one-bedroom apartment
- Generous living room
- Double bedroom with fitted wardrobes
- Double glazing throughout
- Neutral décor throughout
- Bright first floor accommodation
- Large dining kitchen
- Bathroom with shower over bath
- Electric heating
- Convenient Alyth location

Located within the charming town of Alyth, this spacious one-bedroom first floor apartment forms part of the attractive Old Mill Buildings development and offers bright, well-proportioned accommodation ideally suited to first-time buyers, downsizers, or buy-to-let investors.

The property is accessed via a welcoming entrance hallway with useful storage and leads into a generously sized living room offering ample space for both lounge and dining furniture. Large windows allow excellent natural light, creating a bright and comfortable living environment. The fitted dining kitchen is well proportioned and provides a good range of wall and base units together with plentiful workspace and space for dining. The double bedroom is spacious and benefits from fitted mirrored wardrobes, while the bathroom is fitted with a white three-piece suite with shower over bath. The property further benefits from electric heating, double glazing, and neutral décor throughout, allowing purchasers to easily personalise the space. Externally, there is on-street parking nearby together with access to local amenities within Alyth town centre. Offering excellent value and generous accommodation in a convenient location, early viewing is highly recommended to appreciate the space and potential this apartment provides.



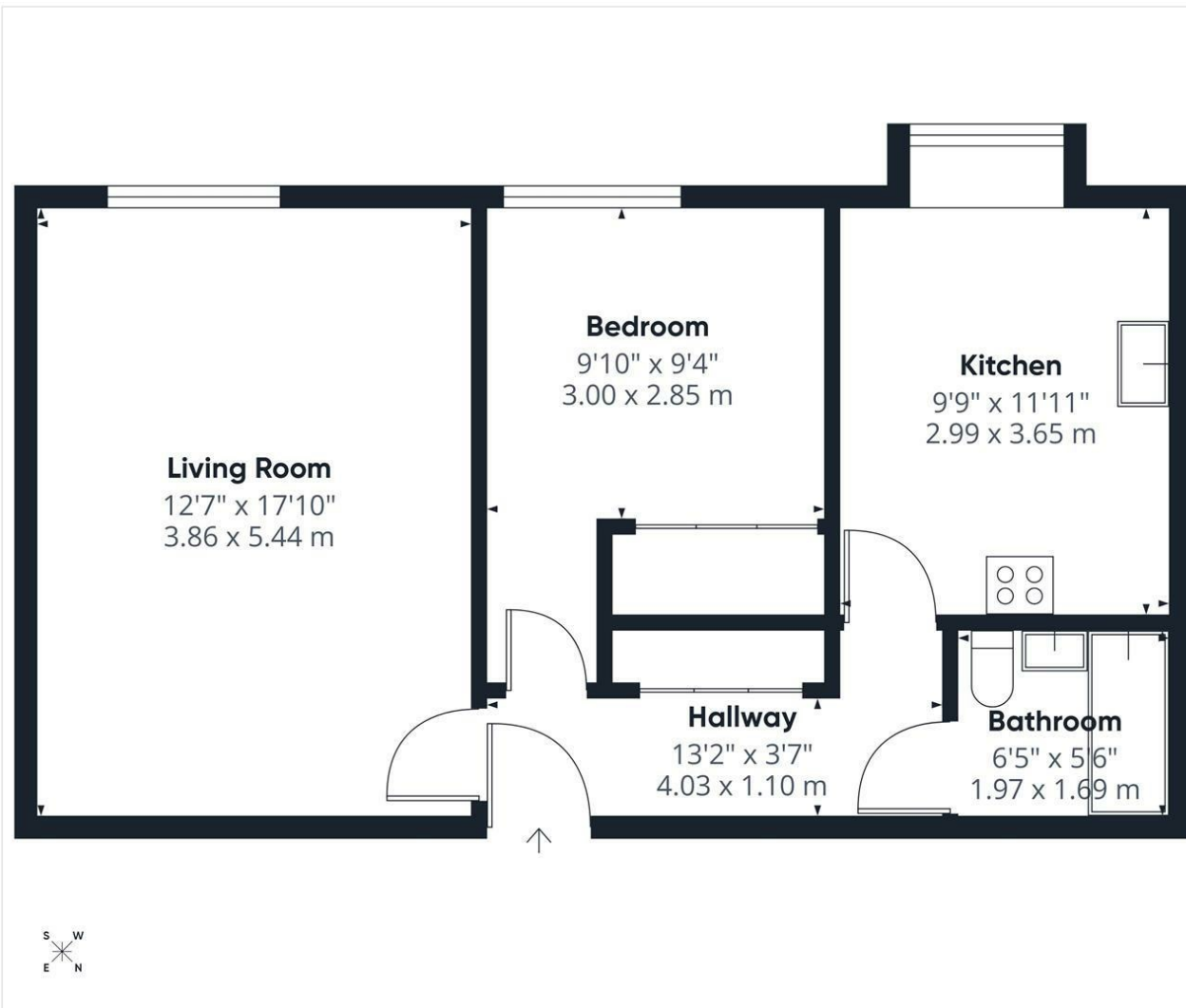


Location

Alyth is a charming and highly sought-after town situated in eastern Perthshire, surrounded by beautiful countryside and offering an excellent range of local amenities including shops, cafés, restaurants, a supermarket, health services, and leisure facilities. The town is well known for its welcoming community atmosphere and attractive setting near the foothills of the Angus Glens. Outdoor enthusiasts can enjoy nearby walking routes, golf courses, and fishing opportunities, while excellent road links provide easy access to Blairgowrie, Perth, Dundee, and beyond. Alyth Primary School and local transport connections make the area popular with a wide range of buyers seeking peaceful small-town living.





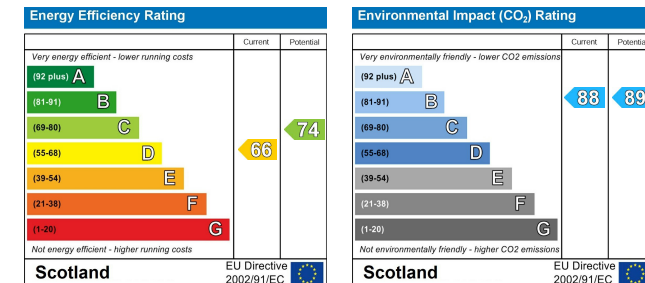
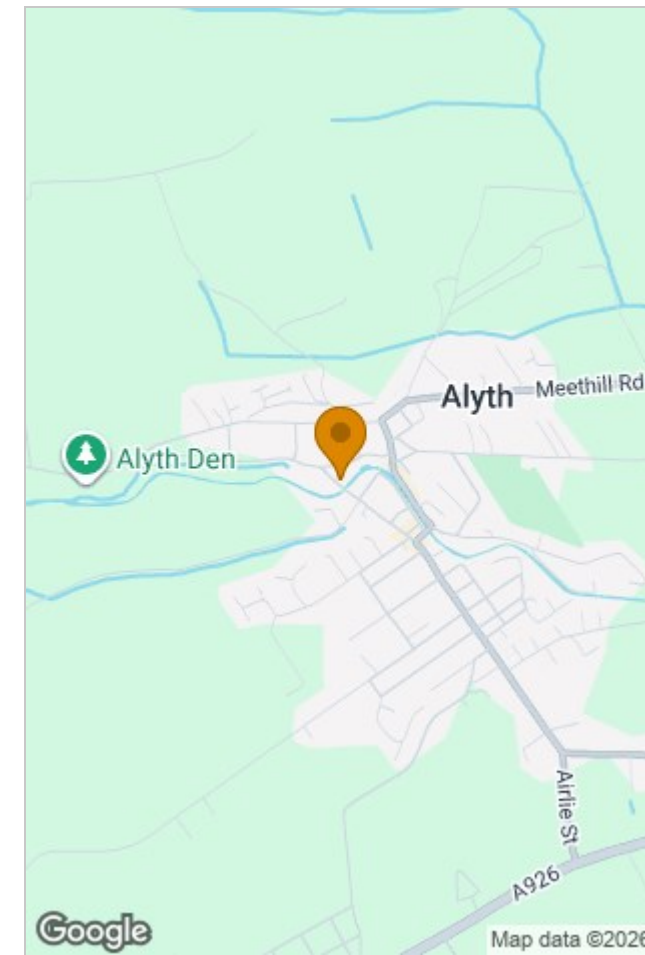


Approximate total area⁽¹⁾
592 ft²
54.9 m²

(1) Excluding balconies and terraces

Calculations reference the RICS IPMS 3C standard. Measurements are approximate and not to scale. This floor plan is intended for illustration only.

GIRAFFE360



Viewing

Please contact our Perth Office on 01738 260 035

if you wish to arrange a viewing appointment for this property or require further information.

The particulars are set out as a general outline only for the guidance of intended purchasers or lessees, and do not constitute, any part of a contract. Nothing in these particulars shall be deemed to be a statement that the property is in good structural condition or otherwise nor that any of the services, appliances, equipment or facilities are in good working order. Purchasers should satisfy themselves of this prior to purchasing.

Inveralmond Business Centre 6 Auld Bond Road, Perth, Perthshire, PH1 3FX

T. 01738 260 035 | hello@wearepossible.co.uk

wearepossible.co.uk

